



LPS PROGRAM

About

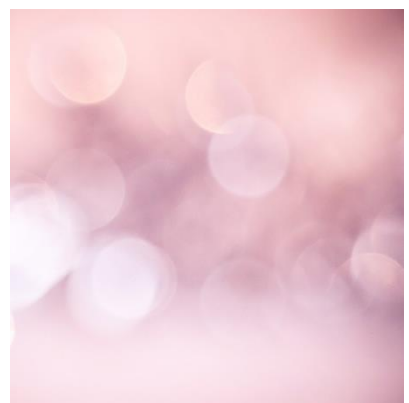
Leveraging personalized supports for immediate covid-19 response for 4k-12th grade students (LPS) is a MMSD program funded through a Wisconsin Partnership Program grant. The mission of LPS is to provide immediate, ongoing, personalized support to approximately 2000 students during the summer of 2020.

Our staff

LPS staff consists of four nurse-social worker teams that can serve approximately 500 students in each of the four attendance areas in the district. Nurses and social workers will collaborate closely when serving students to ensure that not only are physical and mental health issues addressed, but also the social determinants of health and inequities that make certain populations more vulnerable to Covid-19 disease.

Eligibility

Students from 4k to 12th grade attending a school within the Madison Metropolitan School District that have a chronic health condition including, but not limited to diabetes, asthma, pulmonary, sickle cell anemia, cancer, hypertension, or a mental illness that can predispose them to more serious Covid-19 disease.



Program Offerings

(1) Care Coordination for students with chronic medical conditions that may be associated with more serious Covid-19 disease:

- Assuring student access to healthcare services, medical appointments, medications, and treatments
- Education regarding management of the medical condition and the importance during Covid-19 pandemic
- Assisting students in accessing medical services (transportation, insurance, advocacy at appointments)
- Helping students and families access basic needs of daily life (food, housing, etc)

(2) Care coordination for students experiencing mental health or emotional issues related to Covid-19 or the secondary effects of the pandemic by:

- Assessing for trauma, grief, anxiety, neglect/abuse
- Providing counseling for emotional issues
- Offering mental health resources and facilitating referrals to community agencies
- Assisting students in accessing mental health services (transportation, insurance, advocacy at appointments)

(3) Individual, family, and community education regarding:

- Preventing Covid-19 illness
- Responding to Covid-19 illness

How to access

Referral form can be faxed to (608) 204-0349 attention Stephanie Gramann, DNP, RN, CPNP, LPS program facilitator. For questions call (608)204-0349 or email sgramann@madison.k12.wi.us